

A120X

SEMICONDUCTOR PROTECTION FUSES



A120X Amp-trap® Form 101 Semiconductor Protection fuses, rated 1/2A through 30A, 1200VAC are popular for use in traction drive auxiliary circuits and similar applications. A120X fuses are also suitable for use on 1000VDC auxiliary circuits with low time constants.

Features/Benefits

- **1000 Volt DC rated** for wide range of circuits
- **Compact size** fits in where competitive sizes will not fit

Ratings

- **AC:** 1/2-30A
1200VAC, 100kA I.R.
- **DC:** 1/2-30A
1000VDC, 100kA I.R.
L/R = 10ms

Approvals

- Ferraz Shawmut Certified

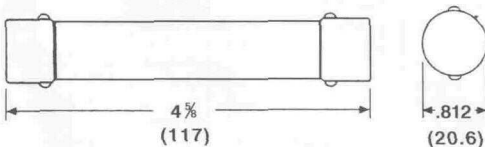
HIGHLIGHTS:

- Fast Acting
- Current Limiting
- Low I²t
- Compact Size

APPLICATIONS:

- Protection of traction drive auxiliary circuits, etc.

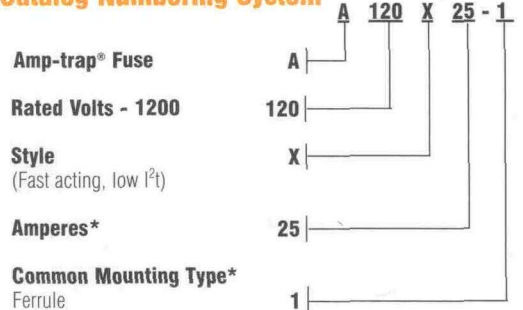
Dimensions - In (mm)



Single Pole Fuse Block for A120X Fuses

FUSE AMPERE RATING	FUSE BLOCK CATALOG NUMBER
1/2-30	P292

Catalog Numbering System



* For ampere ratings and types not listed, call Technical Services.

Standard Fuse Ampere Ratings Catalog Numbers

AMPERE RATING	CATALOG NUMBER	AMPERE RATING	CATALOG NUMBER
1/2	A120X1/2-1	6	A120X6-1
1	A120X1-1	10	A120X10-1
2	A120X2-1	15	A120X15-1
3	A120X3-1	20	A120X20-1
4	A120X4-1	25	A120X25-1
5	A120X5-1	30	A120X30-1

P243/P266/P292

FUSE BLOCKS



FUSE BLOCKS FOR SEMICONDUCTOR FUSES

Ferraz Shawmut P243 and P266 series fuse blocks for Form 101 fuses are glass-filled polycarbonate or laminated phenolic insulator blocks with studs to accommodate bolt-in fuses. The P292 series has a laminated phenolic insulator base with fuse clips. All studs, clips and mounting hardware are tin or zinc plated.

Ratings

- 1 to 900A
- **Clip Type:** 1200VAC or less
- **Stud Type:** 1000VAC or less

Approvals

- UL Recognized Component
Guide IZLT2
File E52283
- CSA Certified
Class 6225, File 32169

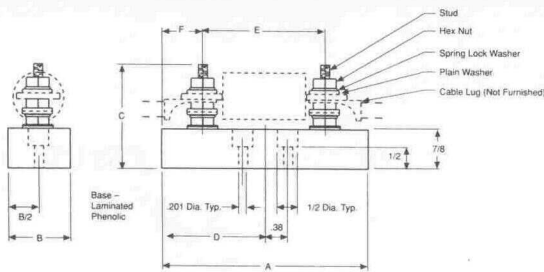


Figure 1

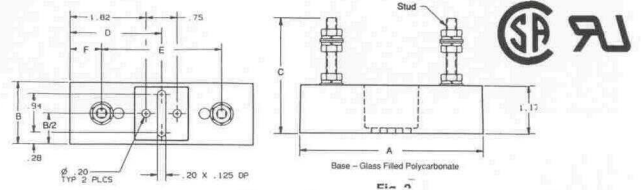


Figure 2

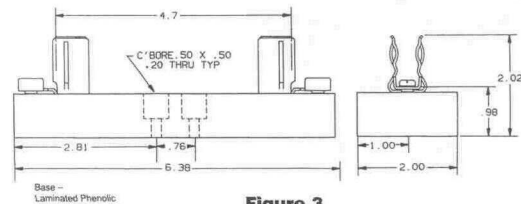


Figure 3

Dimensions

FOR USE WITH	AMPERES	CATALOG NUMBER	DIMENSIONS - INCHES							STUD SIZE	
			FIG.	A	B	C	D	E	F		
A13X	70-450	P243D	2	4.40	1.50	2.79	2.20	2.06	1.17	1/4-20	36
A13X	500-600	P243G	2	4.40	1.50	2.79	2.20	2.44	0.98	5/16-18	84
A25X, A25Z, A30QS	35-60	P243G	2	4.40	1.50	2.79	2.20	2.44	0.98	5/16-18	84
A25X, A25Z, A30QS	70-200	P243	1	4.50	1.50	2.50	2.25	2.38	1.06	1/4-20	36
A25X, A25Z, A30QS	225-600	P243G	2	4.40	1.50	2.79	2.20	2.44	0.98	5/16-18	84
A50P	35-60	P243G	2	4.40	1.50	2.79	2.20	2.44	0.98	5/16-18	84
A50P, A50QS	70-200	P243E	2	4.40	1.50	2.79	2.20	2.88	0.76	1/4-20	36
A50P, A50QS	225-600	P266C	1	6.00	2.00	3.00	3.00	3.28	1.36	3/8-16	144
A60X, A60Z, A70QS	35-200	P243C	2	4.40	1.50	2.79	2.20	3.62	0.39	1/4-20	36
A60X, A60Z	225-600	P266A	1	6.00	2.00	3.00	3.00	4.06	0.97	3/8-16	144
A70P, A70Q	35-100	P243C	2	4.40	1.50	2.79	2.20	3.62	0.39	1/4-20	36
A70P, A70Q	125-400	P266A	1	6.00	2.00	3.00	3.00	4.06	0.97	3/8-16	144
A70P, A70Q	450-600	P266F	1	8.00	2.50	3.00	4.00	5.09	1.45	3/8-16	144
A100P	35-100	P266G	1	6.00	2.00	2.50	3.00	4.25	0.88	1/4-20	36
A100P	125-400	P266L	1	6.00	2.00	3.00	3.00	4.66	0.67	3/8-16	144
A120X	1-30	P292	3	-	-	-	-	-	-	-	-
A025	700-800	FH25F4	1	6.00	2.00	3.00	3.00	2.66	1.67	3/8-16	144
A50QS	700-800	FH50F4	1	8.00	2.50	3.00	4.00	4.21	1.84	1/2-13	360
A50QS	900-1000	FH50F5	1	8.00	2.50	3.00	4.50	4.97	1.50	1/2-13	360
A70QS	450-600	FH70F3	1	8.00	2.50	3.00	4.00	5.09	1.91	1/2-13	360