



CALL YOUR WOODHEAD REPRESENTATIVE TODAY!

SEE PAGES 2-7



COMPONENTS FOR SUPER-SAFEWAY® STANDARD DEPTH AND EXTENDED DEPTH OUTLET BOXES

BOXES



With Screw-Clamp Cord Grip

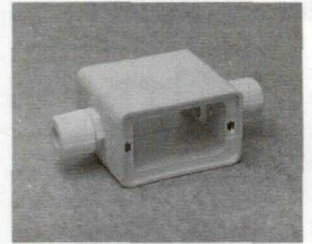
Standard Depth Box (3-3/8in.)
 Extended Depth Box (4-3/8in.)
 Extended Depth Box (4-3/8in.)

3050
 3090



With One MAX-LOC® Grip

3059 (F2)
 3099 (F3)
 3091 (F4)

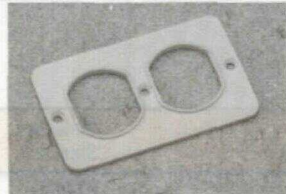


With Two MAX-LOC® Grips

3050F (F2)
 3090F (F3)
 3091F (F4)

COVERPLATES

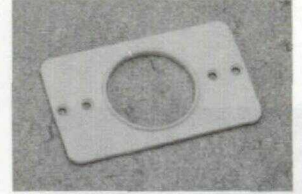
For Standard Outlet Boxes



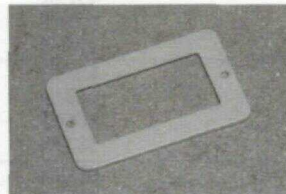
Duplex - 3051



Single - 3052¹



Single - 3055²



GFCI - 3060

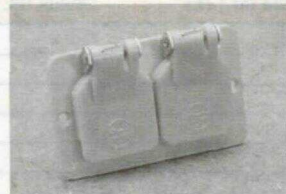


Blank - 3054

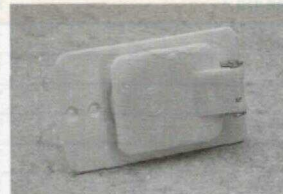


3363

For Weather-Resistant Outlet Boxes



Duplex - 3056



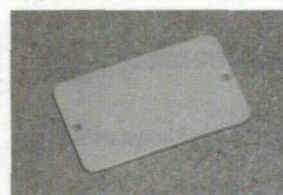
Single - 3057¹



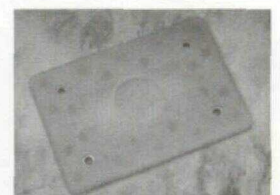
Single - 3058²



GFCI - 3061



Blank - 3054



3363

¹1.39 in. opening
²1.56 in. opening



CALL YOUR WOODHEAD REPRESENTATIVE TODAY!

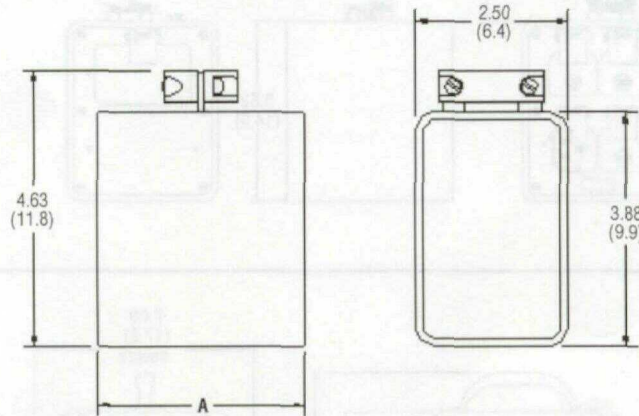
SEE PAGES 2-7



SUPER-SAFEWAY® MULTIPLE OUTLET BOXES — DIMENSIONS: INCH(CM)

STANDARD AND EXTENDED DEPTH OUTLET BOX WITH CLAMPING CORD GRIP

Woodhead Numbers	Dimension A Inch(cm)	Interior Box Dimensions Inch(cm)
3000, 3001, 3050	3.38(8.6)	2.63(6.7) H x 1.75(4.4) W x 3.00(7.6) D
3080, 3081, 3090	4.13(10.5)	2.63(6.7) H x 1.75(4.4) W x 3.63(9.2) D



STANDARD AND EXTENDED DEPTH WEATHER-RESISTANT OUTLET BOX WITH COMPRESSION FITTING

Woodhead Numbers	Dimension A Inch(cm)	Interior Box Dimensions Inch(cm)
3005, 3006, 3059	3.38(8.6)	2.63(6.7) H x 1.75(4.4) W x 3.00(7.6) D
3085, 3086, 3099	4.13(10.5)	2.63(6.7) H x 1.75(4.4) W x 3.63(9.2) D

