



Plant Floor Health Checks

Designed by EESCO, this exclusive suite of services can help clients identify areas of improvement and potential risks by examining plant-floor assets, operations, and processes. These Health Checks are non-intrusive and performed by EESCO Services Technicians, Engineers, and Specialists.

- ⊕ Plant Floor Health Checks are an integral part of EESCO Integrated Service Agreements (EISA) and are typically conducted in the first few months of the EISA contract and repeated annually.
- 🔍 These services can also help identify gaps in compliance and offer recommendations. As a result, many of our clients have leveraged these health checks to proactively investigate areas of concern and have developed successful mitigation plans.
- ✓ To help you make informed decisions on where to prioritize your efforts, EESCO has Solutions Consultants to guide you based on recommendations. Whether we identify obsolete automation or help you understand the future market trends, our expertise and guidance will support you as you make critical business decisions.



This Health Check reviews safety compliance related to electrical equipment, maintenance, and training. It is typically performed by an EESCO Services Technician.

Arc Flash Safety Check

EESCO ACTIONS:

- Verify employees' training status on operating and maintaining a particular voltage class electrical system with both shock and arc flash hazards with levels of personal protective equipment (PPE)
- Review one-line diagram and ensure availability to maintenance staff
- Confirm presence of Arc-Flash labeling on electrical equipment and date of evaluation
- Check that energized work permit program is in place

DELIVERABLE:

Review of existing equipment conformity to NFPA 70E and 2017 NEC and any recommendations on maintaining compliance.

QUALIFICATION CRITERIA:

Recommended if Arc-Flash study hasn't been conducted in the past 5 years. Any concerns or changes in equipment may also suggest a Health Check.



This Health Check evaluates the installed base of automation equipment in designated area by visual plant walk-through and discussion with key personnel. It is typically performed by an EESCO Services Technician.

Automation Equipment

EESCO ACTIONS:

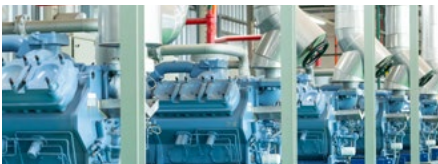
- Evaluate visible condition of control panels and automation equipment
- Determine areas of plant at potential risk due to lifecycle status
- Identify potential causes of repetitive downtime occurrences, their frequency, and impact on production
- Evaluate availability of spares for critical equipment
- Assess concerns or interest in increased productivity

DELIVERABLE:

Findings on overall equipment health, estimated number of panels, panel condition, obsolescence risks, and recommendations.

QUALIFICATION CRITERIA:

Recommended if there is an installed base of Automation Equipment. Other reasons include concerns over productivity, obsolescence, or an ability to maintain and operate as planned.



This Health Check is performed on high-availability critical assets. It is typically performed by an EESCO Services Technician.

Condition Monitoring

EESCO ACTIONS:

- Evaluate current condition of critical assets
- Identify reasons for unexpected downtime occurrences, their frequency, and impact on production
- Assess current maintenance strategies including reliability programs
- Determine health of monitoring equipment, if present

DELIVERABLE:

Key findings on identified critical asset health, current monitoring strategies, and recommendations for future downtime avoidance.

QUALIFICATION CRITERIA:

Recommended if a plant has high availability critical assets (e.g. compressors, pumps, etc.) required for maintaining production. A catastrophic failure of these assets would be highly disruptive to plant operations.



This Health Check is typically performed during warmer months. It is typically performed by an EESCO Specialist or EESCO Services Technician.

Enclosure Thermal Audit

EESCO ACTIONS:

- Inspect every enclosure and analyze ambient environment
- Review any repetitive and/or premature electronic equipment failure
- Identify potential heat issues including problematic electrical components

DELIVERABLE:

A thermal audit report and key findings on enclosures experiencing heat issues. Also includes recommendations on proper cooling solutions to keep enclosed electronics running smoothly.

QUALIFICATION CRITERIA:

Recommended if a plant has enclosures, has experienced unexpected equipment shut down or failure due to heat, or has enclosures whose doors are left open to dissipate heat.



This Health Check focuses on opportunities for energy savings and improved light quality. It is typically performed by an EESCO Lighting Specialist or an EESCO Services Technician.

Lighting Energy Analysis

EESCO ACTIONS:

- Assess interior and exterior lighting
- Identify fixtures, approximate count, and annual operating hours
- Determine current lighting levels with an illuminance meter
- Identify any desired changes in light levels, color, etc.
- Review lighting power consumption, including utility bill if available

DELIVERABLE:

Key findings on current light levels, fixtures, and an estimate of energy consumption. Also includes recommendations based on any poor lighting conditions, energy savings, or safety concerns.

QUALIFICATION CRITERIA:

Recommended for any site with older lighting technology (e.g. T8, T12), or experiencing poor light quality, maintenance issues, or is interested in saving energy costs.



This Health Check reviews all aspects of LOTO safety and is typically performed by an EESCO Services Technician.

Lockout/Tagout (LOTO)

EESCO ACTIONS:

- Review safety procedures in place including LOTO and documentation
- Assess existing training, policies, and/or programs related to safety
- Confirm availability of documentation, audits, and updates
- Review any changes plant personnel want in their current safety program.

DELIVERABLE:

Key findings on current safety procedures, specific areas of focus, and recommendations on scalable solutions.

QUALIFICATION CRITERIA:

Recommended for all plants with machinery or equipment that require practices and procedures to prevent release of hazardous energy while employees perform servicing and maintenance activities, per OSHA.



This Health Check provides insight into potential security risks, key network issues, and opportunities for improvement. It is typically conducted by an EESCO Network IoT Engineer.

Network Evaluation

EESCO ACTIONS:

- Review network drawings, network issues / data cabling selections
- Discuss network security posture
- Review servers and applications
- Review asset inventory of OT networked devices
- Review switch configurations, IP schema, VLANs, segmentation

DELIVERABLE:

Provides a gap analysis and insights on network health, security risks, key network issues, and any further recommendations including assessments, surveys, etc.

QUALIFICATION CRITERIA:

Recommended for sites interested in exploring the health of their networks, potential security risks, and/or is experiencing issues. It should be scheduled around the availability of Plant Engineering / IT personnel who can answer questions about the network, have access to the network drawings, know the plant processes, and have access to networking devices.



For over a century, EESCO has been a trusted partner to businesses like yours. Our service and solution experts have a deep knowledge of the necessities, challenges, and priorities manufacturers face.



This Health Check reviews Power Distribution Equipment for obsolescence to ensure components (circuit breakers, MV fuses etc.) are supported by their manufacturer to minimize any downtime. It is typically performed by an EESCO Power Specialist or an EESCO Services Technician.

Power Distribution Review

EESCO ACTIONS:

- Review one-line power diagram
- Review existing power Distribution equipment
- Discuss any power quality issues related to the system and equipment
- Discuss any nuisance tripping of circuit breakers or fuses.

DELIVERABLE:

Provides a listing of installed equipment with ages. Identifies potential obsolete products and verifies that equipment has required Arc Flash Labels with PPE levels. Recommendations might include further studies, audits, or migration solutions to improve safety or minimize potential downtime in case of equipment failure.

QUALIFICATION CRITERIA:

Typically performed if there is Switchgear equipment onsite. Also performed if interested in the general health of incoming power or experiencing Power Quality or Power Outage issues.



This Health Check examines storeroom conditions to identify opportunities for increasing uptime and efficiency or reducing inventory. Typically performed by an EESCO Specialist or an EESCO Services Technician.

Storeroom Assessment

EESCO ACTIONS:

- Review Documented SOPs and condition of assets
- Expedite event rate, Stockout event rate, and corresponding downtime events
- Review inventory data accuracy
- Perform detailed interviews with key stakeholders

DELIVERABLE:

Key findings on current health of storeroom, risks, environmental conditions, reporting, and any recommendations on increasing uptime.

QUALIFICATION CRITERIA:

This Health Check is typically performed at a site that has an active company-managed storeroom. Availability of qualified personnel to provide above information is essential for a complete picture.

How Our Program Works

Qualification Criteria is different for all the Health Checks. Generally, they all require a dedicated escort to accompany an EESCO technician around the premises. They must have general knowledge and be able to answer high level questions in the area of the Health Check.

Health Checks can be performed individually or grouped together. Upon request, EESCO will work with your designated staff to review the qualification criteria, desired outcomes, and schedule an onsite visit.

We also offer Health Checks in areas beyond what is shown, and our standard offerings are constantly evolving. Your EESCO sales team will be happy to answer your questions.

Any drawings, designs, suggestions, recommendations, or advice provided as part of Health Checks (collectively, "Recommendation") are intended for informational purposes only and are provided "as is" and for informational and conceptual purposes only. You acknowledge that in the event you follow any such Recommendation, you do so at your own risk and agree that EESCO will not be liable for any damage, claims, liabilities, or losses suffered by you or any third party, directly or indirectly, due to you following such Recommendation. Any legal or regulatory compliance obligations shall remain your sole responsibility, and nothing herein is intended to shift such burden from you to EESCO.

Contact your EESCO Sales Representative today

